



AUSTIN & ROE
INDEPENDENT ESTATE AGENTS

5 BEDROOM TERRACED FOR SALE - £450,000

NORTHESK STREET, STONE, STAFFORDSHIRE, ST15 8EP



KEY FEATURES

• 5 BEDROOM TRADITIONAL VICTORIAN TERRACE • ACCOMODATION OVER 4 FLOORS • MANY ORIGINAL FEATURES • GOOD SIZE RECEPTION ROOMS • TOWN CENTRE LOCATION • DRY CELLAR FOR EXTRA STORAGE • PRIVATE WALLED REAR GARDEN • CLOSE TO REPUTABLE SCHOOLS

DESCRIPTION

Austin & Roe have great pleasure in offering for Sale this Five Bedroom Traditional Mid-Terrace "Victorian" Property in one of the most sought after locations in Stone, close to the railway station and only a short stroll from the town centre.

This attractive property with much potential offers accommodation over four floors and comprises an Open Entrance Porch, Entrance Hallway, Lounge, Dining Room, Hallway leading to Kitchen with Separate Pantry and Utility Rooms, Laundry Room with Ground Floor WC. On the first floor is the Landing, Hallway, Master Bedroom, Bedroom 2, Family Bathroom, Bedroom 3, Bedroom 4. On the Second Floor is Bedroom 5, Hallway and Dressing Room.

The property also benefits from a Cellar, Gas Central Heating and Original Sash Windows.

At the rear of the property is a walled garden with mature shrubs and trees, footpaths and a gate onto the service road. If the back wall was removed, there would be space to put a driveway for two cars.

Council Tax Band D
Mains Electric and Gas
Mains Water, Drains & Sewerage.
Broadband FTTC
Mobile coverage.

You can view the virtual tour for this lovely property on our website, rightmove. On-the Market or the internet by typing the following link into your subject bar:-

<https://my.360picture.uk/tour/12-northesk-street>

LOCATION

Leave Stone on Radford Street, take the first turning on the left onto Northesk Street and you will find the property on your right.

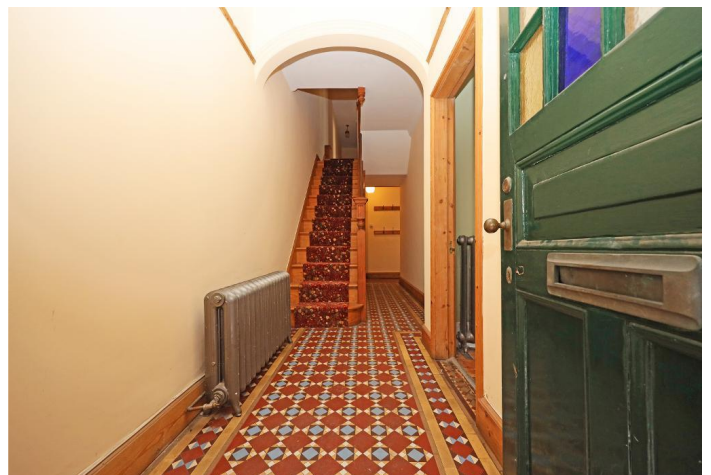
GROUND FLOOR

Entrance Porch - 4' 7" x 4' 6" (1.42m x 1.38m) The Entrance Porch has stepped access from the street level, on to original 'Minton' floor tiles, with exposed brick walls and carved stone surround. The ceiling is painted white with cornice detail, and a feature lantern pendant light. Wooden door and side panels with coloured glass panes, and a beautiful glazed arch above. Period doorbell to the right of the door.

Entrance Hall - 22' 0" x 6' 0" (6.71m x 1.84m) The welcoming Hallway has cream decor with stripped pine skirtings and picture rail, a white ceiling with white coved cornices and a glass pendant light. A plaster archway, floor standing feature cast radiator and original 'Minton' floor tiles. There are doors leading in to the Lounge, Dining Room and a stripped wood staircase with carpet runner rising to the first floor landing. The Hallway opens in to an Inner Hallway.

Inner Hallway - 10' 11" x 8' 4" (3.34m x 2.56m) The Inner Hallway continues with similar decor with quarry tiles to the floor and leads to the Kitchen, Pantry, Utility, Laundry and WC. There is a door under the stairs leading down to the Cellar and a door leading to the garden. There is a large floor standing cast radiator, coat hooks on the walls and a ceiling mounted 'laundry maid' clothes dryer.

Lounge - 15' 10" x 14' 4" (4.83m x 4.38m) Through the stripped pine doors from the Hallway in to the Lounge, with pale green decor, white painted skirting and picture rail. A white ceiling with coved cornices,



STONE

Granville Square, 75A High Street, Stone, Staffordshire, ST15 8AE

T: 01785 338 570

E: sales@austinandroe.co.uk | lettings@austinandroe.co.uk

W: www.austinandroe.co.uk

central pendant light fitting, floor standing cast radiator, beautiful original Victorian fireplace with tiled hearth and wooden surround, together with two alcove built in low units. Exposed original floorboards.

Dining Room - 12' 11" x 13' 4" (3.95m x 4.08m) The Dining Room has pale neutral decor, with white skirting and picture rail, coved cornicing and a central pendant light fitting, a floor standing cast radiator, a log burning stove in the chimney recess, with geometric tile heart and two low alcove storage units either side with open shelving above, white painted sash windows, power points.

Pantry - 7' 1" x 4' 5" (2.16m x 1.37m) The Pantry has neutral decor, a white ceiling and central pendant light, white skirting and a painted white wooden hinged window with original fixtures. The flooring is blue and red quarry tiled. There are 6 levels of wooden open shelving, a small 2 door painted mesh front cupboard, and a telephone socket.

Kitchen - 12' 5" x 13' 8" (3.79m x 4.17m) The Kitchen has pale blue decor, a white ceiling with central double pendant light and a ceiling mounted 'Laundry maid'. There is pine boxing in to two walls at ceiling level, pine skirtings and a four door pine wall unit. The flooring is red quarry tiled, with an outline of blue around the perimeter of the room, a floor mounted cast radiator and an original Victorian bell box over the door. The fireplace is exposed brick, with an archway housing an 'Esse' green range cooker. There is a pine cabinet in the chimney alcove, with three drawers and cupboard doors above. The window is a large wooden bay, with an unusual glazed pitched roof.

Utility - 9' 1" x 11' 11" (2.78m x 3.65m) The useful Utility Room is located adjacent to the kitchen, has cream decor to two walls, exposed brickwork to two walls, with white ceiling and two pendant lights, a feature glazed pitch roof to the side aspect, a painted wooden window with feature tile surround, wooden latch door with brick arches above, followed by a small painted window to the rear elevation with brick arch above, and a further wooden latch door leading in to the Laundry room. The Utility benefits from a large Belfast sink, on brick supports, pine base units, pine wall units, space for a dishwasher, various open shelving and a large 'Falcon' range cooker in cream, on a slab base. The flooring is blue brick, white painted skirtings with a floor mounted red cast radiator. Power points.

Laundry - 10' 0" x 8' 3" (3.05m x 2.52m) The Laundry room has painted cream brickwork walls, a white pitched ceiling with two roof windows. The floor is blue brick with a central drainage grate, two floor standing feature cast radiator and wall mounted four-lamp bar spot light. There is a large Belfast sink on brick supports, a wooden worktop with power above, and space for a washing machine below. A stripped pine latch door with feature stained glass panel above, leads through in to the WC.

Ground Floor WC - A small WC at the rear of the Laundry room, with close coupled toilet, wall mounted spot light, and small painted window to the rear.

FIRST FLOOR

Stairs and Landing - 16' 5" x 7' 0" (5.01m x 2.15m) The wooden staircase rises to a half Landing and hallway above, with wooden balustrade, wooden newel post and handrail, decor as the entrance hallway and a red floral carpet runner. A flight of 4 stairs leads to a second Landing, with a glass lantern pendant light, wall mounted radiator, power points and doors in to Bedroom 2 and the Master Bedroom. Ahead at the end of the landing is a wooden winder staircase, leading to the second floor.

Hallway - 22' 0" x 2' 8" (6.72m x 0.83m) The First Floor Hallway with a plaster archway, central pendant light fitting and doors opening into the family bathroom, bedroom 3 and bedroom 4. There is a red floral carpet runner and wall mounted radiator.

Master Bedroom - 11' 8" x 19' 11" (3.58m x 6.09m) The Master Bedroom has green walls to the white picture rails and white above, a white ceiling with two pendant light fittings, white skirting with exposed wooden floor board, a beautiful Victorian cast iron fireplace with inlaid tile surround and tiled hearth, a low built in wooden cupboard to one side of the chimney breast with open shelves above, built in wooden wardrobes with obscured glass doors to one elevation, a wall-mounted central heating radiator, power and telephone points.

Bedroom 2 - 13' 0" x 13' 3" (3.97m x 4.05m) The Second Bedroom has white walls, a white ceiling with two pendant light fittings, a beautiful original Victorian cast iron fireplace with inlaid tile surround and quarry tile hearth, a built in wardrobe to one side of the chimney breast, painted grey, skirtings and window surround painted grey to match, a white painted sash window with fitted roman blinds, a wall-mounted central heating radiator and exposed wooden floorboards. Power points.

Bedroom 3 - 7' 8" x 11' 1" (2.36m x 3.4m) The Third Bedroom has neutral beige walls, a white ceiling with a central pendant light fitting, a beautiful original Victorian cast iron fireplace with quarry tile hearth, a built in wardrobe to one side of the chimney breast, painted white, skirtings and window surround painted white to match, a white painted sash window, a wall-mounted central heating radiator and exposed wooden floorboards. Power points.

Bedroom 4 - 9' 0" x 7' 11" (2.75m x 2.43m) The Fourth Bedroom has neutral beige walls, a white ceiling with central pendant light fitting, skirtings and window surround painted white, a white painted sash window, a wall-mounted central heating radiator and neutral grey fitted carpet. Power points and an aerial. There is a white painted hatch to the ceiling for access in to the loft space, and a white open shelf above the door.

Family Bathroom - 8' 3" x 7' 8" (2.54m x 2.36m) The Family Bathroom benefits from half height white 'Metro' wall tiles with dark feature grouting, dark blue decor above, a white ceiling with contemporary central light, one sash painted white window with obscured glass and coloured glass panels, and one smaller painted white window with obscured glass and coloured glass panels. A black and white mosaic effect tile floor. The white bathroom suite comprises a fitted panel bath, shower cubicle with grey stone effect wall lining and chrome fittings, glass screen, a fitted vanity unit with white basin and chrome taps, cupboards and draw with wall mounted mirror above, a low-level WC, extractor fan and a wall mounted black heated towel rail/radiator.

SECOND FLOOR

Hallway - 14' 1" x 4' 10" (4.31m x 1.49m) The Second Floor Hallway has white decor, with a white vaulted ceiling, two wooden opening roof windows, contemporary spot lights to the ceiling and wall mounted lighting, open wooden shelving, a wall-mounted central heating radiator, in built storage in to the roof void, wooden flooring with a floral carpet runner and power points.

Bedroom 5 - 18' 11" x 19' 2" (5.78m x 5.86m) The wooden winder staircase leads in up in to Bedroom 5, with a wooden galleried balustrade and handrail, white decor, a white vaulted ceiling with recessed spotlights, wall mounted contemporary light fittings, three wall-mounted central heating radiators, a wooden dormer window and low level roof window, a central support column, wooden flooring and open shelving in the chimney breast alcoves. Power points and two steps down leading to the Hallway.

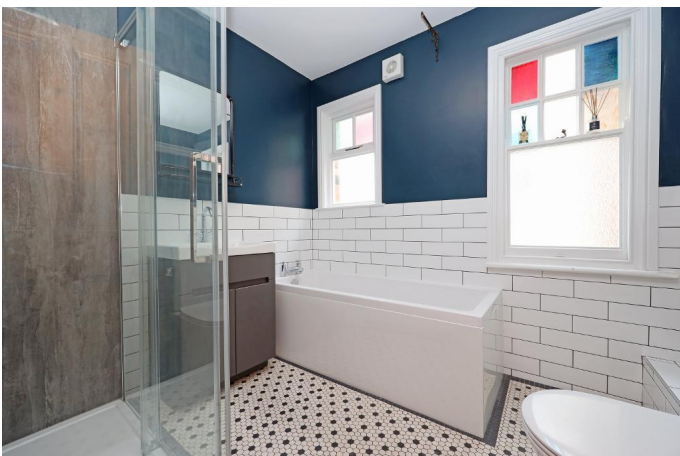
Dressing Room - 10' 10" x 9' 4" (3.31m x 2.87m) The Dressing Room is an open space off the Second Floor Hallway, with white decor, a vaulted ceiling with opening wooden roof window and spot light. There is useful open storage space in the roof void, and power points. A wall mounted central heating radiator is shared with the Hallway.

BASEMENT

Cellar - 12' 9" x 13' 4" (3.89m x 4.07m) To the rear of the ground floor staircase is a stripped pine door opening onto the stairs down to the cellar which has white-washed brick walls, blue engineering bricks to the floor, provides useful extra storage, is dry and benefits from power and lighting. Both the Gas and Electric Meters are housed here.

EXTERIOR

Garden - To the side and rear of the property is a beautiful walled garden with much potential. There are brick built log stores, brick built raised beds with quarry tile edging, a small lawned area, and blue engineering brick paths, gated access out to the access road behind and space for refuse bins.





GROSS INTERNAL AREA
TOTAL: 236 m²/2,547 sq ft
CELLAR: 23 m²/246 sq ft, GROUND FLOOR: 90 m²/972 sq ft
FIRST FLOOR: 75 m²/811 sq ft, SECOND FLOOR: 46 m²/497 sq ft
EXCLUDED AREA: PORCH: 2 m²/21 sq ft
SIZE AND DIMENSIONS ARE APPROXIMATE, ACTUAL MAY VARY.



ADDITIONAL PHOTOS



ENERGY EFFICIENCY

